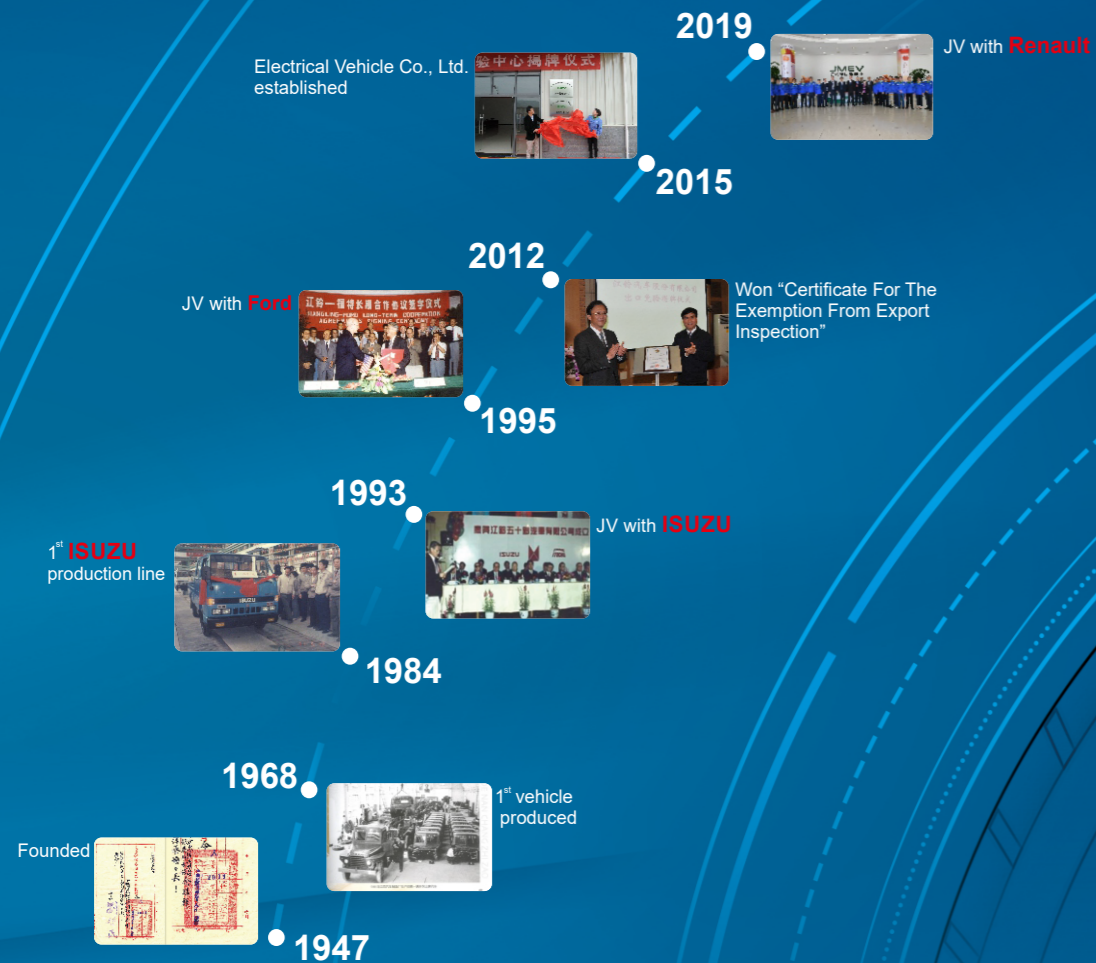


# JMCG Facts

The only commercial vehicle company establishing joint-ventures with 3 of Fortune Global 500 enterprises in China ( Ford, Isuzu, Renault )  
Over 5 decades of experience in manufacturing vehicles



Jiangxi Jiangling Motors Import & Export Co., Ltd.  
Add: 969, Jinrong Street, Honggutan District, Nanchang, Jiangxi, China  
Tel: +86-791-86738769 Fax: +86-791-86738577  
E-mail: sales@jmie.com.cn Website: www.jmcg-global.com



No.1 Light bus share  
Top 2 Pickup share  
Top 6 Light truck share

# JMC TOURING



**JMC**  
f JMCGMotors

# G Efficient Power

Classical power system with advanced technology, and ensure the power efficiency.



## JX493 High Efficiency Powerful Engine

- Max.output 85KW/3200rpm
- Max torque 285Nm/2000rpm
- Low speed torque 186Nm/1000rpm
- Bosch high pressure common rail system
- Acceleration time from 0 to 60 km/h is only 8.12s



Front engine rear drive structure creates strong gradeability



Getrag transmission German tech gear shifting more smooth

# S Smart Configuration

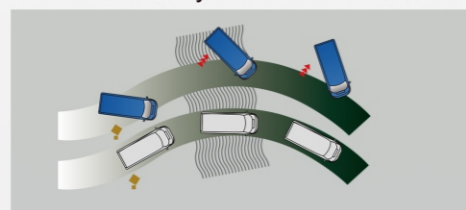
More convenient and comfortable configuration, bring more fun to work.



Multi-functional steering wheel integration for safety and convenience



HD TFT large screen entertainment system



Equipped with ABS+EBD for better active safety performance



Double airbags

# C Flexible Capacity

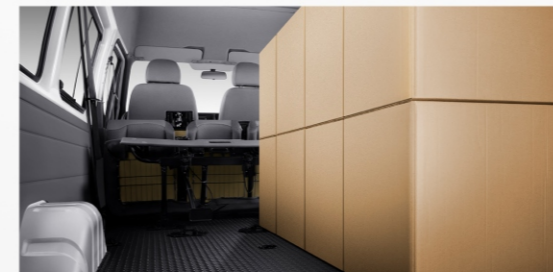
People oriented design and maxium loading function



All models with 1100mm open width side door make loading more convenient



Rear door opening angle 180°



3.51T total mass and 11.5m super carrying capacity



Flexible seats

# E Fuel Economy

DOC&SCR urea injection system  
Low fuel consumption  
more environmentally friendly



# Specifications & Configurations

Vehicle Model	Fuel Type	Gasoline				Diesel					
	Wheelbase	Short Wheelbase		Long Wheelbase		Short Wheelbase		Long Wheelbase		Long Wheelbase	Extended Long Wheelbase
	Application	Bus	Van	Bus	Kombi	Bus	Kombi	Bus	Chassis-on cabin (Van)		
	Low Roof	/	/	/	6/7/8	/	/	/			
	Medium Roof	11/12	3	14/15	3/6/7/8/10	7/8/11/12	3/6/7/8/10	14/15	3	3	
	High Roof	/	/	14/15	/	/	6/7/8/10	14/15			
General Specification											
Overall Dimension (mm) (L*W*H)	Low Roof	/	/	/	4944*1972*2025	/	/	/			
	Medium Roof	4744/4944* 1972*2215	5696* 1972*2240	5496/5696* 1972*2240	4944* 1972*2215	4744/4944* 1972*2215	5696* 1972*2240	5496/5696* 1972*2240	5508*/	/	
	High Roof	/	/	5496/5696* 1972*2625	/	/	5696* 1972*2625	5496/5696* 1972*2625			
	GVW (kg)	2830	3300	3300	3510	3510	3510	3510	4000	4000	
	Min. Turning Diameter(m)	5.65		6.9		5.65		6.9		6.9	
	Wheelbase(mm)	2835		3570		2835		3570	3570	3570	
	Front and Rear Wheel Track(mm)	886	903	903	886	886	903	903	903	1453	
Power Train											
Engine	Model	4G69S4N				JX493					
	Displacement (cc)	2.378				2.771					
	Emission Standard	Stg V				Stg V					
	Compression Ratio	9.8				17.2					
	Intake Type	Natural Aspiration				Turbo					
	Fuel Tank Capacity (L)					68					
Transmission	SMT	•	•	•	•	•	•	•	•	•	
	Front Engine/Rear Drive	•	•	•	•	•	•	•	•	•	
	Suspension System (front/rear)	Front McPherson Independent Suspension, Rear Tepered Leaf Spring with Hydraulic Absorber									
	Brake System	Front Disc Rear Drum									
	Aluminum Alloy Wheel Rim	○	○	○	○	○	○	○	/	/	
Exterior											
	Frameless Body	•	•	•	•	•	•	•	/	/	
	Frame Body	/	/	/	/	/	/	/	•	•	
	Front & Rear Mugguard	•	•	•	•	•	•	•	•	•	
	Rear Pedal	○	•	○	•	○	•	○	/	/	
Interior											
	Interior Trim Color	Beech	Gray	Beech	Gray	Beech	Gray	Beech	Gray	Gray	
	Multifunctional Steering Wheel	○	○	○	○	○	○	○	○	○	
	Vent With Bright Strip Trim	•	○(with MP5)	•	○(with MP5)	•	○(with MP5)	•	○(with MP5)	○(with MP5)	
	Shift Panal With Bright Strip Trim	•	○(with MP5)	•	○(with MP5)	•	○(with MP5)	•	○(with MP5)	○(with MP5)	
	Shift Panal With Leather Trim	/	•	/	•	/	•	/	•	•	
	Luggage Rack	/	/	○(High Roof)	/	/	/	○(High Roof)	/	/	
	mm Luggage Rack (mm) (L*W*H)	/	/	2920×270×220	/	/	/	2920×270×220	/	/	

Vehicle Model	Fuel Type	Gasoline			Diesel						
	Wheelbase	Short Wheelbase		Long Wheelbase	Short Wheelbase		Long Wheelbase		Long Wheelbase	Extended Long Wheelbase	
	Application	Bus	Van	Bus	Kombi	Bus	Kombi	Bus	Chassis-on cabin (Van)		
Safety											
	ABS	•	•	•	•	•	•	•	•	•	•
	EBD	•	•	•	•	•	•	•	•	•	•
	Airbags (Driver & Front Passenger Seats)	○	○	○	Standard for 6,7 and 8 Seats Models, Optional for the Others	Standard for 7 and 8 Seats Models, Optional for the Others	Standard for 6,7 and 8 Seats Models, Optional for the Others	○	○	○	
	Parking Distance Control(PDC)	○	○	○	○	○	○	○	/	/	
	Side Door Alarm Switch	•	•	•	•	•	•	•	/	/	
	Tailgate Alarm Switch	•	•	•	•	•	•	•	/	/	
	3-point Seatbelt(Front Row Side Seats)	•	•	•	•	•	•	•	•	•	
	Auto-Locking Seatbelts (2-point)	Not for Front Row	/	/	/	Only for 10 Seats Model	Only Available for 11 and 12 Seats Model	Standard for the Middle and Right Seats of Second Row of 10 Seats Model	S	/	/
	ISOFIX	/	/	/	Not Available for 3 and 10 Seats Model	Only Available for 7 and 8 Seats Model	Not Available for 3 and 10 Seats Model	/	/	/	
A/C											
	Front A/C	•	•	•	•	•	•	•	•	•	
	Rear Evaporator	•	/	•	/	•	/	•	/	/	
	Rear Heater	/	/	•	/	/	/	•	/	/	
Media											
	Loud Speaker	4	2	4	2	4	2	4	2	2	
	MP5 ( 7-Inch Screen : Radio+USB+BT+Bluetooth )	○	○	○	○	○	○	○	○	○	
Color											
	Icy White	•	•	•	•	•	•	•	•	•	
	Aurora Silver	○	○	○	○	○	○	○	○	○	



**Bus** Excellent Choice for Travel Commuting & Business Reception



**Kombi** Dual Use for Passenger Transport & Logistic



**Van** Flexible Multipurpose & Cost Effective

# Original Ford Transit product DNA improved appearance



## JMC World-class supplier



**Light Truck:** Electronic control unit, sensors, oil pump, fuel injector  
**Pick Up/SUV:** Fuel injector, ESP assembly



**SUV (Diesel model):** Intake camshaft



**SUV/Pick Up:** Transfer box assembly, transfer box ECU



**SUV:** Rear oxygen sensor



**Light Van:** ACU (Airbag control unit)



**SUV:** Tyre



**Light Van (Gasoline model):** Clutch, fuel pump plunger  
**SUV (Diesel model):** Generator OAP belt pulley



**SUV/Pick Up:** Electronic gear shifter, automatic transmission, EPS assembly



**Pick Up/ Light Van:** Transmission



**Light Truck:** Exhaust pipe



**SUV:** Tyre



**Light Van:** Seats



**Light Van:** Clutch



**Light Van (Gasoline model):** Battery



**Light Truck/SUV/Pick Up:** Turbocharger



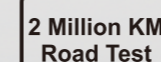
**Light Truck:** Pistons and piston rings



**Light Truck:** Combined instrument, A/C control panels, HVAC, condenser  
**Light Van:** Combined instrument



**SUV/Pick Up:** Exhaust pipe system



Harsh Road Test



Ford Global Quality Improvement Process



Ford Global Product Development System



- Exported to 110 countries and regions  
- UN authorized supplier